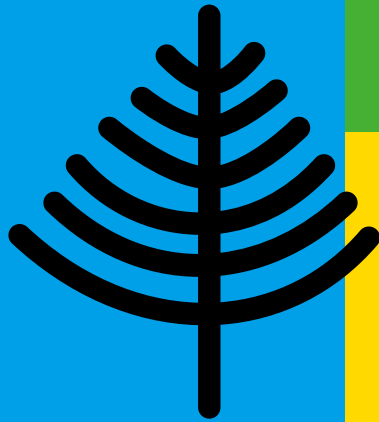
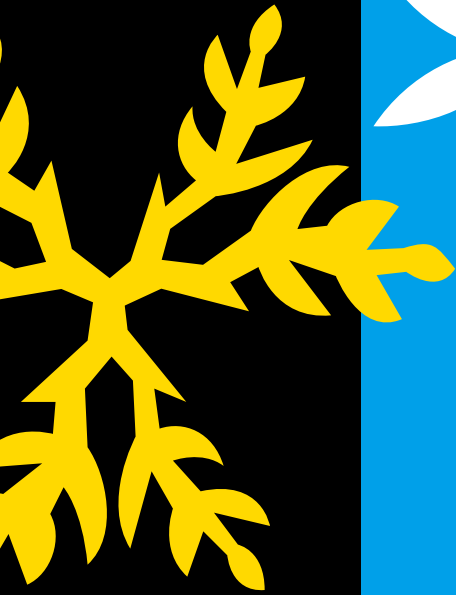




PEGASUS®

EX

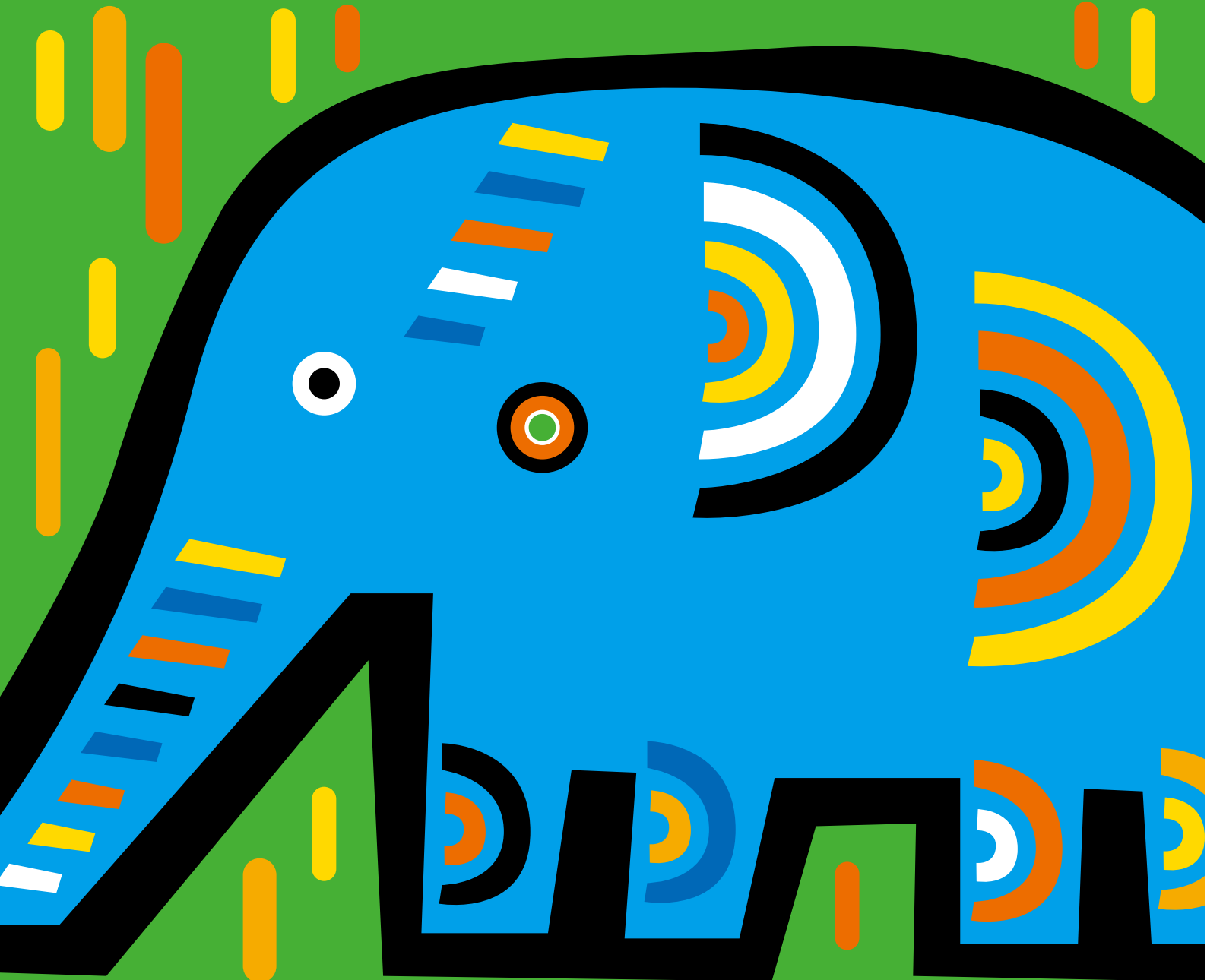


EX2200: Double ChainStitch
machines

EX3200: Safety StitCh machines

EX5200: Overedgers

EX5400: Overedgers with condensed
StitCh CaPability



A Masterpiece of Pegasus' Technology

Top of the line machines to produce beautiful stitches, with reliable mechanism, technology that achieves high speed and durability, plus ease of operation and maintenance. Offers full line of subclasses that provide high quality finishes in various operations. A wide variety of labor saving devices help increase productivity.



Point 1 Produces beautiful stitches

You will easily obtain well-balanced and beautiful stitches with easy-to-adjust thread tensions. The machines feed the fabric more properly to achieve high quality stitches. The double chainstitch, safety stitch machines produce neatly finished seams with balloon stitches formed by looper threads of good texture.



Point 2 High productivity with high speed machines

Increases productivity at a max speed of 8,500 rpm.



Point 3 Increased durability

Includes the mechanism that reduces wear and tear of parts increasing durability.



EX Specifications in common

● Max. speed	8,500 rpm
● Main feed dog's movement amount	0.6mm - 5.2mm
● Overedge width	1.5mm - 8mm
● Presser foot lift	Up to 8mm
● Differential feed ratio	1 : 0.4 - 1 : 3.8

Note) The details of the specs. vary by subclass.



Point 4 Ease of operation

Replacing the needles, threading the machine and adjusting thread tension are easy.

Point 5 Easy to maintain the machine

Alignment marks on looper thread guides and double chainstitch looper thread take-up eliminate the need for bothersome measurement using a ruler. Thanks to the micro adjustment feature, a precise adjustment is easily made on the lower looper front-to-back movement and double chainstitch looper front-to-back movement.



Other Features

■ Easy to adjust the stitch length

All you have to do is press the push button.

■ Tilt adjustment on the feed dog is readily made.

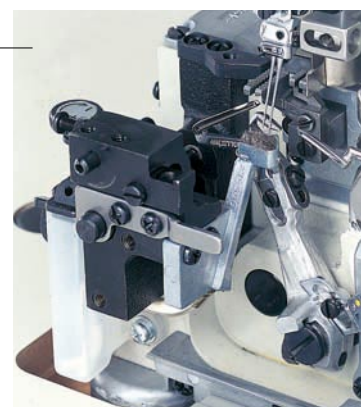
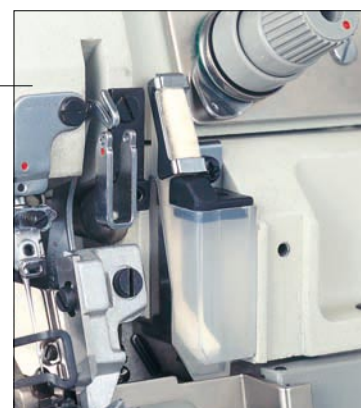
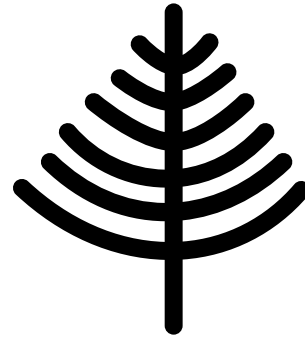
Easy access to the adjustment screw without opening the cover

■ Adjusting the differential feed ratio is easy

A fine adjustment is effortlessly made.

■ All subclasses equipped with upper and lower needle/thread cooler devices(HR) that protect the fabrics and threads against heat.

Heat is generated on the needle due to friction when the needle penetrates the fabric at high speeds. This causes thread breakage and/or stitch skipping. This series is equipped with HR device that always prevents heat generation on the point of the needle, allowing the thread to move smoothly and producing the stitches uniformly.



EX Devices

■ Thread chain cutter (KS/KH)

Devices that suck up the thread chain by air and cut it. No scissors are needed. There are two types of suction inlets, vertical type (KS: the suction inlet is positioned vertically to the cloth plate) and flat type (KH: the suction inlet is positioned flush with the cloth plate).



■ Tape and/or thread chain cutter (TK/AT)

Devices that trim the tape and thread chain when sewing is completed

Manual type:TK

Two types of switches available, finger switch and knee switch to get TK actuated. The device operates on either pneumatic or electric power sources.

Automatic type:AT

The sensor detects the fabric edge to trim the tape. This AT includes the controller that regulates the length to be trimmed by stitch counting.



■ Electronic hemming guide (EH)

Eliminates the need for inspection for run-offs when sewing is completed. When the sensor detects the overlock seams on the pre-closed sides of garments, this guide automatically operates to make the machine run toward the inside of the fabric, preventing run-offs.



■ Presser foot lift (PL)

Reduces operator fatigue. Pressing the treadle actuates the air cylinder to raise the presser foot.



■ Backlatching device (BT)

Device that backlatches the thread chain by sewing it back into the seams on the fabric at the start of sewing. Eliminates the need for a bartacker and the operator, reducing production time and dramatically increasing efficiency.



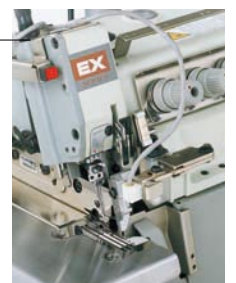
■ Belt feeding device (BF)

The belt on this device forcibly feeds the fabric under the presser foot, preventing the fabric from plyshifting. Suitable for the fabrics and operations that tend to plyshift, such as attaching collars.



■ Fabric misalignment alarm (SD)

Alerts you with light and sound when fabric misalignment occurs during sewing, such as attaching sleeves or closing sides. The sensor detects fabric misalignment. Eliminates the need for sewing the fabric over again due to plyshift.





EX Series Subclasses

Double chainstitch machines : EX2200

seam	Type of machine	Model	No. of needles	No. of threads	Machine speed(rpm)
	Binding tape				
1	1-needle machines for binding tape on linings of coats, pocket bags	EX2241-52P2/083	1	2	7,500
2	2-needle machines for binding tape on linings of coats, pocket bags	EX2242-52P2/083	2	4	7,500
	Binding tape/shirring				
3	Binding tape/shirring on neck openings of blouses and similar garments	EX2241-42P2/083	1	2	7,500
	Turn-up/down hemming				
4	Turn-up hemming towels	EX2241-32P1/063	1	2	7,500



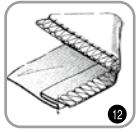
Safety stitch machines : EX3200

seam	Type of machine	Model	No. of needles	No. of threads	Machine speed(rpm)
	Plain seaming extra light to light weight fabrics				
5	Plain seaming light weight fabrics, such as dress shirts, with puckering preventive capability	EX3216 (15) N-01/222	2	5 (4)	7,500
	Plain seaming light to medium weight fabrics				
5	Plain seaming light weight fabrics, such as dress shirts	EX3216 (15) -02/223	2	5 (4)	7,500
5	Plain seaming medium weight fabrics, such as casuals	EX3216 (15) -03/233	2	5 (4)	7,500
6	3-needle machines for plain seaming cotton pants and similar garments with wide seams	EX3244-03/333	3	6	7,500
	Plain seaming heavy to extra heavy weight fabrics				
5	Plain seaming extra heavy weight fabrics, such as jeans	EX3216 (15) -A04/435	2	5 (4)	6,500
5	Plain seaming extra heavy weight fabrics, such as jeans, with extra high lift	EX3216 (15) H-A05/535	2	5 (4)	6,000
6	3-needle machines for plain seaming extra heavy weight fabrics, such as jeans	EX3244-A04/435	3	6	6,500
	Shirring				
7	Shirring medium weight fabrics, such as night wear, apron, children's wear, etc.	EX3216 (15) -42/233	2	5 (4)	7,000
	Shirring/piping				
8	Shirring/piping on medium weight fabrics, such as night wear, apron, children's wear, etc.	EX3216 (15) -42P2/233	2	5 (4)	7,000
	Attaching tape				
9	2-needle machines for attaching tape	EX3216-53/233	2	5	7,000
	3-needle versatile machines				
5 6 10 11	Versatile machines for 1- and 2-needle overedging, safety stitching	EX3244-04/435	3	6	6,500



Overedgers : EX5200

seam	Type of machine	Model	No. of needles	No. of threads	Machine speed(rpm)
	Plain seaming extra light to light weight fabrics				
10	Plain seaming night wear, apron, children's wear, etc.	EX5204-01/223	1	3	8,500
11	Plain seaming night wear, apron, children's wear, etc., with puckering preventive capability	EX5214N-01/283	2	4	8,000
	Plain seaming light to medium weight fabrics				
10	1-needle machines for plain seaming light to medium weight fabrics, such as T-shirts, polo shirts, etc.	EX5204-02/233	1	5	8,500
10	1-needle machines for plainseaming, such as T-shirts with use blindstitch hemming bottoms	EX5204-02H/223	1	3	8,500
11	2-needle machines for plain seaming light to medium weight fabrics, such as T-shirts, polo shirts, etc.	EX5214-03/333	2	4	7,500
11	2-needle machines for plain seaming light to medium weight fabrics, such as T-shirts, polo shirts, etc. with capability of preventing the thread from being too tightened	EX5214-M03/333	2	4	7,500
	Plain seaming heavy to extra heavy weight fabrics				
10	Plain seaming extra heavy weight fabrics, such as bulky sweaters and similar garments	EX5214H-55/545	2	4	5,500
10	Plain seaming extra heavy weight fabrics, such as sweaters and similar garments, with capability of preventing the thread from being too tightened	EX5214-M53/333	2	4	7,500



Blindstitch hemming

12	Blindstitch hemming bottoms of T-shirts and similar garments	EX5205-12/223	2	1	3	8,500
----	--	---------------	---	---	---	-------

Shirring

13	Shirring nigh wear, apron, children' s wear	EX5214-43/333	2	4	7,000
----	---	---------------	---	---	-------

Shirring/piping

13	Shirring/piping on night wear, apron, children' s wear	EX5214-43P2/333	2	4	7,000
----	--	-----------------	---	---	-------

Attaching tape

15	Attaching tape for light to medium weight fabrics	EX5214-M53/333	2	4	7,000
----	---	----------------	---	---	-------

15	Attaching tape for heavy to extra heavy weight fabrics	EX5214-54/443	2	4	6,500
----	--	---------------	---	---	-------

15	Attaching tape for heavy weight fabrics	EX5214H-55/545	2	4	5,500
----	---	----------------	---	---	-------

Backlatching

18	1-needle backlatching	EX5204-82/223	1	3	8,500
----	-----------------------	---------------	---	---	-------

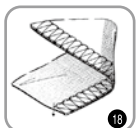
17	2-needle backlatching	EX5214-83BA/333	2	4	7,500
----	-----------------------	-----------------	---	---	-------

Versatile machines

10 11 12	Versatile machines for 1- and 2-needle plain seaming, blindstitching	EX5214-92M2/223	2	4	8,000
----------	--	-----------------	---	---	-------

Serging

18	Serging heavy to extra heavy weight fabrics	EX5204-24/445	1	3	6,500
----	---	---------------	---	---	-------



Overedgers with condensed stitch capability : EX5400

seam	Type of machine	Typical Model	No. of needles	No. of threads	Machine speed(rpm)
	Plain seaming light to medium weight fabrics				
19	Plain seaming with condensed stitch capability	EX5404-02/233	1	3	8,500
	Backlatching				
20	1-needle backlatching with condensed stitch capability	EX5404-82BA/233	1	3	8,500
21	2-needle backlatching with condensed stitch capability	EX5414-83BA/333	2	4	7,500



PEGASUS®

PEGASUS SEWING MACHINE MFG.CO.,LTD.
 5-7-2,Sagisu,Fukushima-ku,Osaka 553-0002,Japan
 Phone:81-6-6458-4739 Telefax:81-6-6454-8785
<http://www.pegasus.co.jp>

※The specification and/or appearances of the equipment described in this catalog is subject to change because of modification without previous notice.

